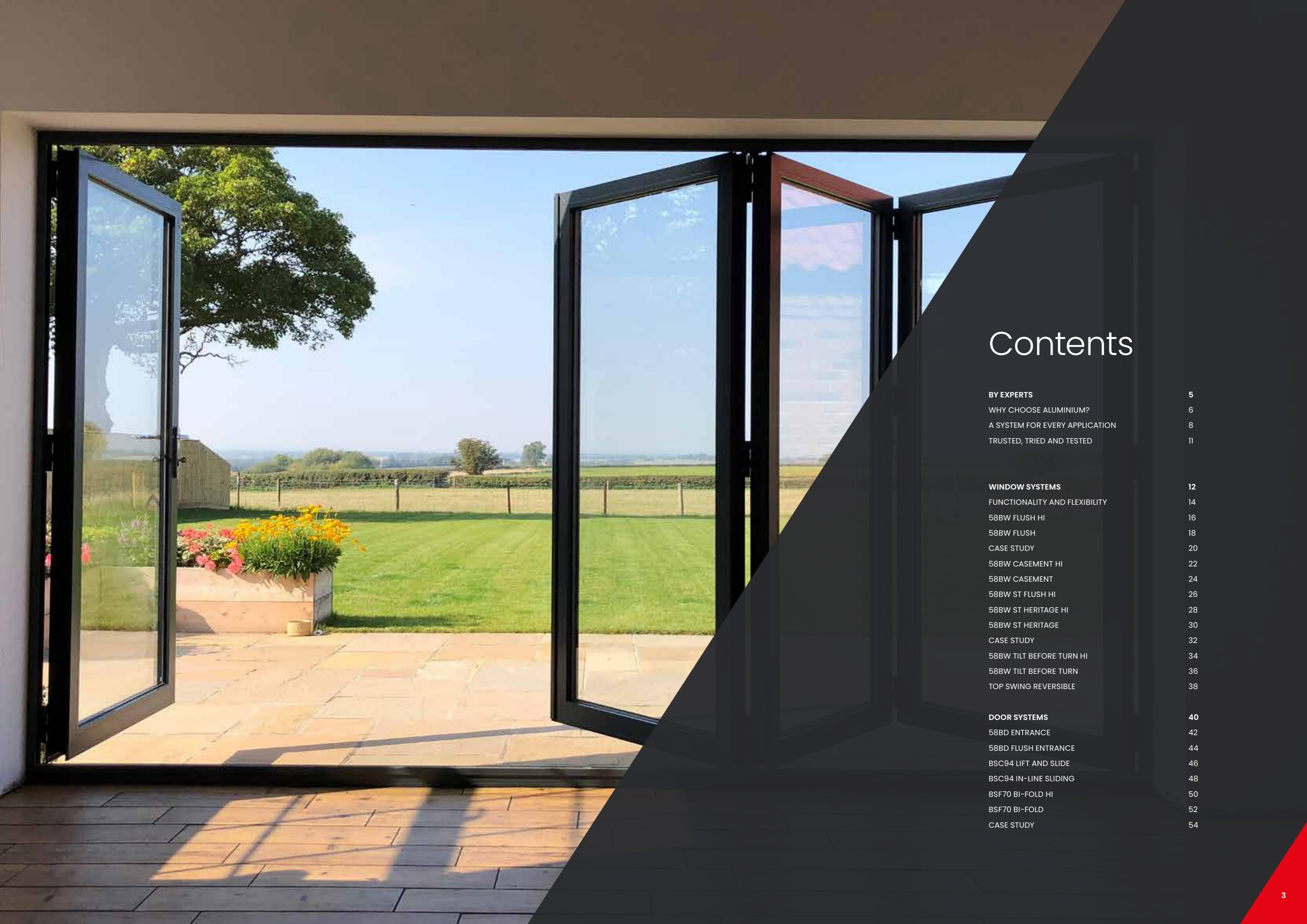




Optio

Aluminium Window
& Door Systems



Contents

BY EXPERTS	5
WHY CHOOSE ALUMINIUM?	6
A SYSTEM FOR EVERY APPLICATION	8
TRUSTED, TRIED AND TESTED	11
WINDOW SYSTEMS	12
FUNCTIONALITY AND FLEXIBILITY	14
58BW FLUSH HI	16
58BW FLUSH	18
CASE STUDY	20
58BW CASEMENT HI	22
58BW CASEMENT	24
58BW ST FLUSH HI	26
58BW ST HERITAGE HI	28
58BW ST HERITAGE	30
CASE STUDY	32
58BW TILT BEFORE TURN HI	34
58BW TILT BEFORE TURN	36
TOP SWING REVERSIBLE	38
DOOR SYSTEMS	40
58BD ENTRANCE	42
58BD FLUSH ENTRANCE	44
BSC94 LIFT AND SLIDE	46
BSC94 IN-LINE SLIDING	48
BSF70 BI-FOLD HI	50
BSF70 BI-FOLD	52
CASE STUDY	54



By experts for experts

It's fair to say we live and breathe aluminium at AluK. From its melting point of 660.32°C, its vital role in the aerospace industry, to its remarkable low density, there's little we don't know about atomic number 13. More importantly, we're experts at using this versatile metal to create high performance and sustainable window and door systems that surpass the needs of fabricators and installers across the UK.

From the production line to our design and sales offices, every member of the AluK team is a leader in their field. It's this collective expertise and our traditional family values that has enabled us to design, engineer and manufacture industry-leading facade systems since 1993; that's over 25 years of experience.

Boasting slimmer sightlines and greater feature options, all our products are manufactured to the highest UK standards. So whether commercial or residential, modern or traditional, you can be confident our experts will ensure every AluK product delivers peerless performance and signature style.

AT ALUK WE BELIEVE
COLLABORATION IS KING. IT'S
WHY WE'RE PROUD OF THE
PARTNERSHIPS WE'VE BUILT
WITH FABRICATORS, INSTALLERS
AND ARCHITECTS THROUGHOUT
THE UK AND BEYOND

Why choose AluK aluminium systems?

For over 25 years, we've been at the forefront of aluminium window and door design.

But why aluminium?

- › It's lightweight, strong and almost 100% recyclable
- › It doesn't warp or rust and is near maintenance-free
- › Plus it's exceptionally versatile and easy to install

Driven by design

Without compromising on strength, our aluminium window and door systems are designed to offer your customers the narrowest of sightlines, allowing bigger glazing and providing greater light into their home.

Our integrated systems are designed for maximising profiles and parts, as well as to ensure fast fabrication and a wide range of installation options.

Colour

Access a large spectrum of contemporary and classic colour choices and finishes.

We also offer a range of standard single and dual colour products from stock with our stock offer.

For full core offer details email info.uk@aluk.com

Security

We understand the importance of security to your customers. That's why all our window and door systems are independently tested to ensure they not only meet current security regulations for new builds, but that they're inherently burglar resistant too.

Most of our systems are also certified by PAS 24, Secured by Design and Q-marked accredited.

Thermal efficiency

Our window and door systems offer award-winning U-value performance for both double and triple glazing.

In fact, we were the first company to ever gain an A-rated aluminium double glazed window system in the market.

Performance

Each system includes water and acoustic barriers, and utilises the latest manufacturing technologies and techniques to provide long-term peace of mind.

They also have integrated drainage paths that allow water to pass through the system. This, combined with the high quality air seals and barriers, ensures they can tackle the everchanging British climate with ease.

Window Energy Ratings

Our aluminium window systems are rated for their energy efficiency using the familiar A-G scale.

This means homeowners and architects can instantly see which windows to choose. WERs also affect fabricators, because in order to supply WER products a fabricator must join an official and recognised scheme.

This is to ensure that manufacturers can prove they have audited processes in place and that the ratings displayed are accurate.

As you'd expect, we have our own group scheme at AluK. This provides members fast track access to all our WER data, saving them valuable time and effort.



Service excellence

Expert service is key at AluK, so our trained architectural technicians and engineers are always on hand to offer guidance and support from design through to installation. We also have highly experienced Project Consultants able to help with design, system selection, construction details and project specifications for your specific sector.

AluK Academy

Training is another key service we provide. From CPDs and toolbox talks to hands-on guidance at our Academy Centre, we provide a wide range of training options to all our customers.

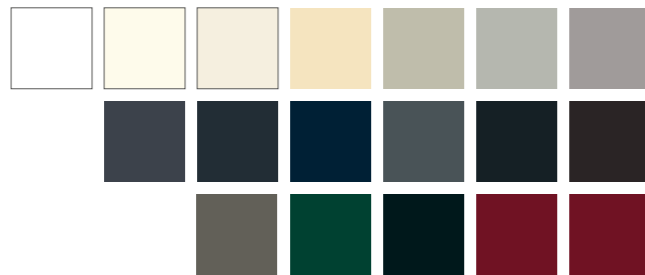
To find out more simply email training.uk@aluk.com

Colours for every occasion

From contemporary to heritage, the AluK colour collection combines four high-quality colour ranges that offer style and durability.

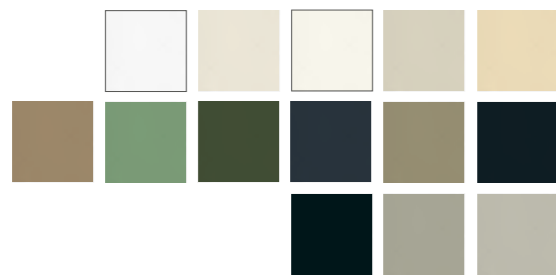
Elements, Homestead, Spectrum and Urbane each offer a wide choice of durable coatings that are extremely resistant to scratching and corrosion.

With an inspired range of textured, non-textured, metallic and special effects finishes, these palettes reflect both the latest colour trends and the enduring classics within the market.



Elements

Our stylish matt colour range features 18 vibrant RAL options in a smooth finish. Inspired by the diversity of nature, Elements offers the perfect combination of rich colours and versatile shades that will compliment any style of property.



Homestead

Inspired by traditional and period design, our timeless Homestead range offers a classic palette of tranquil neutrals and deep, cool hues. Combining the charm of the past with a modern, durable finish, Homestead has 13 tasteful RAL options to discover, all in a long-wearing textured finish for windows and doors.



Spectrum

Spectrum combines striking tones with textured metallic and special effects finishes to create an opulent range that is both modern and highly durable. With 21 contemporary textured colours, Spectrum compliments both high-end residential projects and volume specifications.



Urbane

Inspired by the intensity of contrast, Urbane offers the distinctive combination of strong tones and smooth shades that match the look and feel of an anodised finish. With 14 bold metallic colours to choose from, Urbane offers a protective finish to windows and doors in high-end and commercial developments.

If you'd like a colour brochure please contact us on 01291 639739 or email us at info.uk@aluk.com

These images should only be used as a colour guide rather than a true representation of the actual product colour.





Trusted, tried and tested

From trusted favourites to the latest innovations, our comprehensive range of aluminium window and door systems has been designed and developed with fabricators, installers and homeowners in mind at every stage.

Furthermore, every system delivers the aesthetic appeal and exceptional build quality demanded by the industry. It also goes without saying they've all been tested and certified to the latest standards and accreditations.

These include PAS 24, BS4873, Secured By Design and Qualicoat for starters. Not to mention ISO 9001. They also hold Q-Mark Certifications for general performance windows and enhanced security windows and doors. Should we go on?

Whichever system you choose, we'll work closely with you to ensure you have all the information you require for successful fabrication and installation.

All the latest structural, thermal and wind calculations are available, as is a comprehensive suite of CAD, NBS Specifications, performance and environmental data.

ALWAYS UP TO THE TEST



Window systems

For over two decades we've been designing unique aluminium window systems that exceed the performance standards expected in modern building design.

Manufactured to the highest standards, our systems are available in depths of 58mm, 70mm and 77mm, with a wide choice of colours and finishes customers desire, with the performance, quality and flexibility the trade demands.

An extensive range of complementary fittings are also available to ensure every design, whether commercial or residential, is exceptional.

We understand reputations are everything, so it goes without saying that all our aluminium window systems are rigorously tested and meet the most stringent security standards.

They also meet the Secured by Design standard issued by the UK Association of Chief Police Officers, and are BRE A-rated on the green guide.



Functionality and flexibility

We offer a wide range of window frame options that cater for various applications such as interface depths or bay angles.

We also understand that the ability to combine frame options is a major benefit to both the cost and appearance.

Our frame options include deep head profiles for trickle vents, odd leg frames for accommodating hardware timber and heritage for overcoming stone mullion and cill details.

Equal leg frame options are available from 25mm, 35mm and 55mm options.

Frame extenders are also available for our 70mm systems and for improved U-values.

Glazing options

Every project is different, which is why our systems allow for both internal and external glazing options.

We also offer glazing add-ons to suit heritage style applications.

Aesthetics

We offer a wide range of internal and external aesthetic styles. Chamfered, Ovolo, Square or Putty line options can really make any project look modern or traditional.

Our double beaded options allow for internal glazing without the use of dummy vents.

Openings

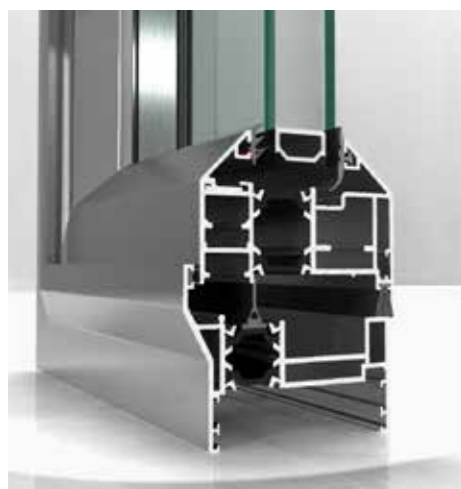
AluK windows are available in a full range of opening options; from open in to open out, side hung, top hung, bottom hung and tilt before turn, to French casement, fixed light and multi-light.

Design features

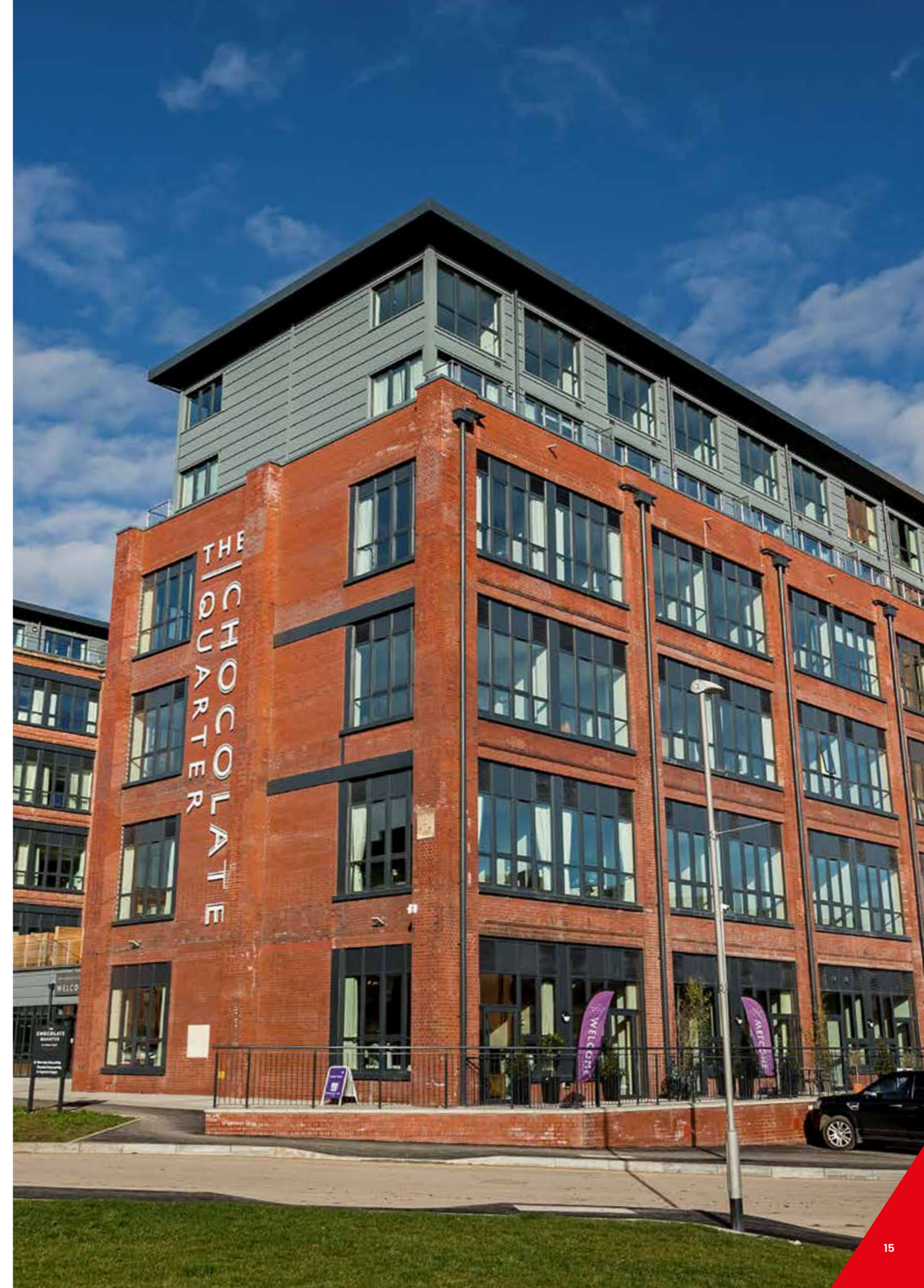
- › From odd leg and equal leg to deep head and frame reversers
- › Internal and external glazing options
- › PAS 24 certified
- › Integrated systems for maximising profiles and parts
- › Three chamber profile for maximising strength while crimping - achieves perfect corner assembly every time



Multiple glazing options



A wide range of aesthetics





58BW FLUSH HI Window



The 58BW Flush window combines minimal sightlines and maximum weather resistance with all the best features of the tried and trusted 58BW range: advanced performance, versatility and security.

With a choice of slim sashes and a range of configuration options, the flush finish and slim sightlines of the 58BW Flush make this the perfect choice for contemporary new-build and refurbishment projects.

A double rebate provides market-leading weather performance, even in more exposed locations, and the 58BW Flush utilises common hardware with the existing 58BW and Heritage ST window ranges to ensure it can withstand a range of weather conditions.

The 58BW Flush shares the same sashes, features and hardware with the 70mm frame option for the 58BW suite, making it quicker and easier to fabricate with just three new profiles.



DESIGN FEATURES

- › Advanced weather performance – features like the double rebate, and friction stays on side-hung windows offer protection against bad weather conditions
- › Slimmer sightlines – 45mm ultra-slim sash suits a range of property styles
- › Unique polyamide thermal break design to improve thermal performance
- › Certified under the Secured by Design scheme
- › Tested to PAS 24

OPTIONS

- › Open-out sashes including top and side-hung.
- › The flush shadow line can be complimented with a choice of flat, putty line or stepped edge (crittal style) vent styles to suit the property
- › Available in a range of standard and RAL colours.
- › Stock offer – readily available on a 5-day lead time in colours 9910HG, 7016M, and 9005M as well as dual colour white/grey and white/black.

SPECIFICATIONS

Performance and accreditations	58BW FLUSH HI
U-Value (Double Glazing)	1.4 W/m ² K
U-Value (Triple Glazing)	1.2 W/m ² K
Window Energy Rating (WER)	B - C
BRE Green Guide Rating	A rated
Air Permeability	Class 4 (600 Pa)
Water Tightness	Class 9a (600Pa)
Wind Resistance	Class E2400 (2400 Pa)
Security	PAS 24
3rd Party Certification Q-Mark	✓

System

Depth	70mm
-------	------

Configurations

Opening	Open-Out
Top Hung	✓
Side Hung	✓
Bottom Hung	✓
Dummy Sashes	✓
Fixed Light	✓
Multi Light	✓
French Casement	✓

Size and weight limits

Top Hung	
Max Size (mm)	1750w x 2500h
Min. Size	300w x 350h
Max Weight	180kg
Side Hung	
Max Size (mm)	1300w x 1750h
Min. Size	300w x 300h
Max Weight	55kg
Fixed Light	
Max Size (mm)	-
Min. Size	-
Max Weight	250kg

Glazing

Glazing Options	Internal & External
Glazing Thickness**	24mm-40mm

System Features

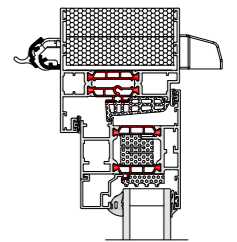
Single Colour	✓
Dual Colour	✓
Textured Finish	✓
Anodised Finish	✓
Multi-Point Locking	✓
Sightline (Frame to Vent)	98mm
Sightline (Vent to Mullion to Vent)	113mm
Sightline (Dummy Sash)	158mm
Sightline (Fixed Light)	53mm

**Glazing thickness: Other thicknesses may be possible dependant on profile combinations specified. Fabricators should refer to AluK technical manual glazing section for details.

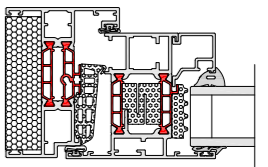
CAD CROSS SECTIONS AND THERMAL PROFILE

Additional details are available on request.

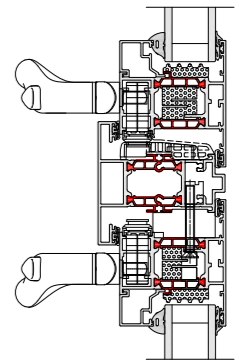
› 58BW FLUSH HI HEAD



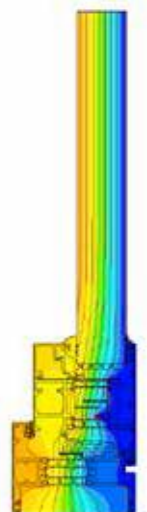
› 58BW FLUSH HI JAMB



› 58BW FLUSH HI MULLION



› 58BW FLUSH HI THERMAL PROFILE



58BW FLUSH Window



The 58BW Flush window combines minimal sightlines and maximum weather resistance with all the best features of the tried and trusted 58BW range: advanced performance, versatility and security.

With a choice of slim sashes and a range of configuration options, the flush finish and slim sightlines of the 58BW Flush make this the perfect choice for contemporary new-build and refurbishment projects.

A double rebate provides market-leading weather performance, even in more exposed locations, and the 58BW Flush utilises common hardware with the existing 58BW and Heritage ST window ranges to ensure it can withstand a range of weather conditions.

The 58BW Flush shares the same sashes, features and hardware with the 70mm frame option for the 58BW suite, making it quicker and easier to fabricate with just three new profiles.

DESIGN FEATURES

- ▶ Advanced weather performance – features like the double rebate, and friction stays on side-hung windows offer protection against bad weather conditions
- ▶ Slimmer sightlines – 45mm ultra-slim sash suits a range of property styles
- ▶ Unique polyamide thermal break design to improve thermal performance
- ▶ Certified under the Secured by Design scheme
- ▶ Tested to PAS 24

OPTIONS

- ▶ Open-out sashes including top and side-hung.
- ▶ The flush shadow line can be complimented with a choice of flat, putty line or stepped edge (crittal style) vent styles to suit the property
- ▶ Available in a range of standard and RAL colours.
- ▶ Stock offer – profiles readily available on a 5-day lead time in colours 9910HG, 7016M, and 9005M as well as dual colour white/grey and white/black.

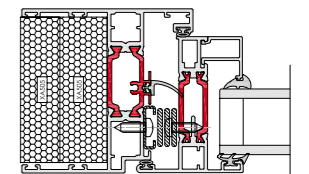
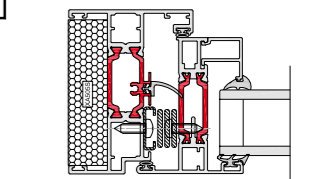
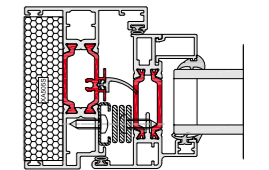
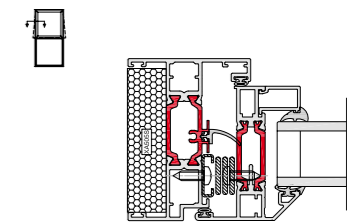
SPECIFICATIONS

Performance and accreditations	58BW FLUSH
U-Value (Double Glazing) (Ug: 1.0 W/m²K)	1.5 W/m²K
Window Energy Rating (WER)	B-C
Air Permeability	Class 4 (600 Pa)
Water Tightness	Class 9a (600 Pa)
Wind Resistance	Class E2400 (2400 Pa)
Security	PAS 24 & SBD
3rd Party Certification Q-Mark	✓
System	
Depth	70mm
Configurations	
Top Hung	✓
Side Hung	✓
Dummy Sashes	✓
Multi-Light	✓
French Casement	✓
Fixed Light	✓
Size and weight limits	
Top Hung	
Max Size (mm)	1400w x 1200h
Min. Size (mm)	350w x 250h
Max Weight	35kg
Side Hung	
Max Size (mm)	700w x 1400h
Min. Size (mm)	300w x 350h
Max Weight	26kg
Fixed Light	
Max Weight	250kg
Glazing	
Glazing Options	Internal Bead
Glazing Thickness	24mm - 35mm
System Features	
Single Colour	✓
Dual Colour	✓
Textured Finish	✓
Anodised Finish	✓
Multi-Point Locking	✓
Sightline (Frame to Vent)	74mm
Sightline (Vent to Mullion to Vent)	111mm
Sightline (Dummy Sash)	74mm
Sightline (Fixed Light)	43mm

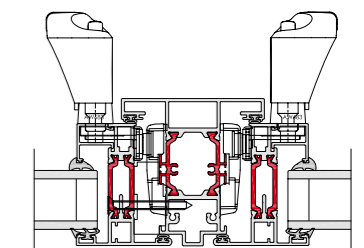
CAD CROSS SECTIONS AND THERMAL PROFILE

Additional details are available on request.

▶ 58BW FLUSH JAMBS



▶ 58BW FLUSH FRENCH CASEMENT FLOATING MULLION



▶ 58BW THERMAL PROFILE



Contemporary Design with a traditional twist

AluK's 58BW Flush windows were launched at the start of 2020 as the ideal replacement for timber windows in traditional refurbishment projects. Replicating the slim sightlines and sharp shadow lines of timber, they offer all the inherent benefits of aluminium, such as low maintenance, and enhanced security, thermal and weather performance.

For the owners of a picturesque brick and flint cottage in rural Hampshire, they proved the perfect choice to replace draughty and inefficient timber frames in their 19th century home.

The owners wanted to replace their existing windows with something which maintained the essential character of the property, but which had a nod to contemporary 21st century design. They chose AluK's 58BW frames, with an ultra slim 45mm sightline on the sash and 24mm on the frame, primarily because of the aesthetics, but also because they are virtually maintenance free.

In total, 13 open out casement windows have been installed in the cottage, all in RAL7004 Signal Grey with a 5mm shadow line and no visible gasket. Double glazed throughout, they are not only eliminating draughts, but also helping to reduce energy bills.

The windows were manufactured by AluK's fabrication partner CWG Choices and installed by Allums Property Services of Newbury. Fabrication is straightforward because the 58BW Flush uses the same standard sash profiles as the AluK 58BW ST window and, installation is made easy thanks to the 70mm depth and internal glazing.

Kevin Allum of Allums Property Services commented: "This was the first time we had installed the 58BW Flush frames and it was a real pleasure. The installation looks great and the homeowners were delighted with the whole process from start to finish."





58BW CASEMENT HI Window



Built to the highest UK standards, the 58BW Window System delivers a high performance and cost-effective solution with impressively narrow profiles. Equally at home on residential and commercial projects, the system is available in a number of formats including Top Hung, Side Hung and French Casement.

The system's clean lines and advanced functionality meet the demands of almost every modern building construction. Its competitive pricing also makes it a highly popular choice with specifiers both in the UK and around the globe. In addition to being certified under Secured By Design and tested to PAS 24, the 58BW also holds a Green Guide 'A' rating.

DESIGN FEATURES

- › Certified under the Secured By Design scheme
- › Tested to PAS 24
- › Integrated deep head profiles for ease of trickle ventilation
- › Unique polyamide thermal break design to improve thermal performance
- › Casement system sightlines to match the Tilt-Before-Turn window sightlines
- › Reverse rebate option for internal glazing throughout

OPTIONS

- › Available in two frame depths: 58mm or 70mm
- › Supports both open-in and open-out projects
- › Internally or externally glazed to accommodate low and high-rise projects
- › Glazing 24mm-40mm
- › Available in the following configurations: Top Hung, Side Hung, Bottom Hung, Fixed Light, Multi-light and French Casement
- › Available for Lifetime Homes (LFT)
- › Dedicated fixing straps for ease of installation
- › Designed with a Euro Groove to accommodate standard locking hardware
- › Smoke vent certification compliance to EN12101-2:2003 Annex G
- › Available in single or dual colour polyester powder coating, texture and anodised finishes



SPECIFICATIONS

Performance and accreditations	58BW CASEMENT HI
U-Value (Double Glazing)	1.4 W/m²K
U-Value (Triple Glazing)	1.2 W/m²K
Window Energy Rating (WER)	B - C
BRE Green Guide Rating	A rated
Air Permeability	Class 4 (600 Pa)
Water Tightness	Class 9a (600Pa)
Wind Resistance	Class E2400 (2400 Pa)
Security	PAS 24
3rd Party Certification Q-Mark	✓

System

Depth	58 & 70mm
-------	-----------

Configurations

Opening	Open-Out
Top Hung	✓
Side Hung	✓
Bottom Hung	✓
Tilt & Turn	-
Fixed Light	✓
Multi-Light	✓
French Casement	✓

Size and weight limits

Top Hung	
Max Size (mm)	1750w x 2500h
Min. Size	300w x 350h
Max Weight	180kg
Side Hung	
Max Size (mm)	838w x 1750h
Min. Size	300w x 300h
Max Weight	55kg
Bottom Hung	
Max Size (mm)	1750h x 1750w
Min. Size	350h x 350w
Max Weight	45kg (5 hinges)

Butt Hinges (Side & Bottom Hung)

Top hung (max weight)	40 Kg
Side hung (max weight)	24 Kg
Fixed Light	
Max Weight	250kg

Glazing

Glazing Options Internal Bead	Internal & External Bead
Glazing Thickness **	24mm - 40mm

System Features

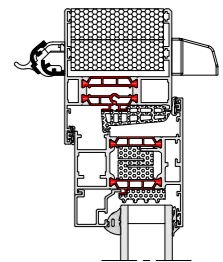
Single Colour	✓
Dual Colour	✓
Textured Finish	✓
Anodised Finish	✓
Multi-Point Locking	✓
Smoke Vent Compliance	✓
Sightline (Frame to Vent)	75mm
Sightline (Vent to Mullion)	89mm
Sightline (Fixed Light)	43mm

**Glazing thickness: Other thicknesses may be possible dependant on profile combinations specified. Fabricators should refer to Aluk technical manual glazing section for details.

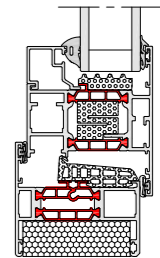
CAD CROSS SECTIONS AND THERMAL PROFILE

Additional details are available on request.

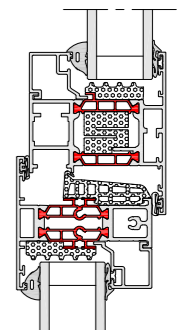
› 58BW CASEMENT HI HEAD



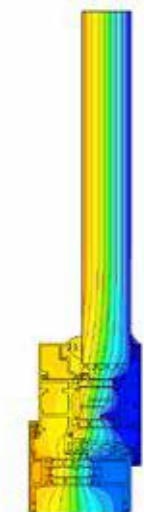
› 58BW CASEMENT HI JAMB



› 58BW CASEMENT HI MULLION



› 58BW CASEMENT HI THERMAL PROFILE





58BW CASEMENT Window

➤ OVULO



➤ CHAMFERED



➤ SQUARE



Built to the highest UK standards, this effective and high performance solution offers clean lines and advanced functionality.

Available in either 58mm or 70mm frame depth, casement windows are the perfect choice for both residential and light commercial projects, whether new build or renovation. Windows can also be made to project in or out.

DESIGN FEATURES

- Certified under the Secured By Design scheme
- Tested to PAS 24
- Integrated deep head profiles for ease of trickle ventilation
- Unique polyamide thermal break design to improve thermal performance
- Casement system sightlines to match the Tilt-Before-Turn window sightlines
- Reverse rebate option for internal glazing throughout

OPTIONS

- Available in two frame depths: 58mm or 70mm
- Supports both open-in and open-out projects
- Internally or externally glazed to accommodate low and high-rise projects
- Glazing 23mm-40mm
- Available in the following configurations: Top Hung, Side Hung, Bottom Hung, Fixed Light, Multi-light and French Casement
- Available for Lifetime Homes (LFT)
- Dedicated fixing straps for ease of installation
- Designed with a Euro Groove to accommodate standard locking hardware
- Smoke vent certification compliance to EN12101-2:2003 Annex G
- Available in single or dual colour polyester powder coating, texture and anodised finishes

SPECIFICATIONS

Performance* and Accreditations

U-Value (Double Glazing) (Ug: 1.0 W/m²K)	1.5 W/m²K
U-Value (Triple Glazing) (Ug: 0.7 W/m²K)	1.2 W/m²K
Window Energy Rating (WER)	B - C
BRE Green Guide Rating	A Rated
Air Permeability	Class 4 (600 Pa)
Water Tightness	Class 9a (600 Pa)
Wind Resistance	Class E2400 (2400pa)
Acoustic Performance	Rw (C;Ctr) 42 (-1;-5) dB
Security	PAS 24 & SBD
3rd Party Certification Q-Mark	✓

System

Depth	58mm & 70mm
-------	-------------

Configurations

Opening	Open-Out
Top Hung	✓
Side Hung	✓
Bottom Hung	✓
Tilt & Turn	x
Fixed Light	✓
Multi-Light	✓
French Casement	✓

Size and weight limits

Top Hung

Max Size (mm)	1750w x 2500h
Min. Size (mm)	300w x 200h
Max Weight	180kg

Side Hung

Max Size (mm)	838w x 1750h
Min. Size (mm)	300w x 300h
Max Weight	55kg

Bottom Hung

Max Size (mm)	1750w x 2500h
Min. Size (mm)	300w x 200h
Max Weight	50kg (2 hinges)

Fixed Light

Max Weight	250kg
------------	-------

Glazing

Glazing Options	Internal & External Bead
Glazing Thickness	23mm-40mm

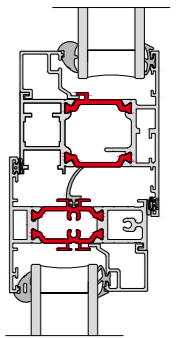
System Features

Single Colour	✓
Dual Colour	✓
Textured Finish	✓
Anodised Finish	✓
Multi-Point Locking	✓
Smoke Vent Compliance	✓
Sightline (Frame to Vent)	75mm
Sightline (Vent to Mullion)	89mm
Sightline (Fixed Light)	43mm

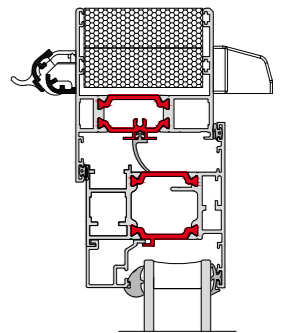
CAD CROSS SECTIONS AND THERMAL PROFILE

Additional details are available on request.

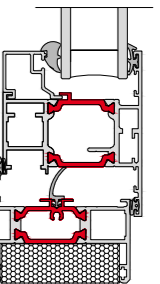
➤ 58BW MULLION TRANSOM



➤ 58BW HEAD



➤ 58BW GILL

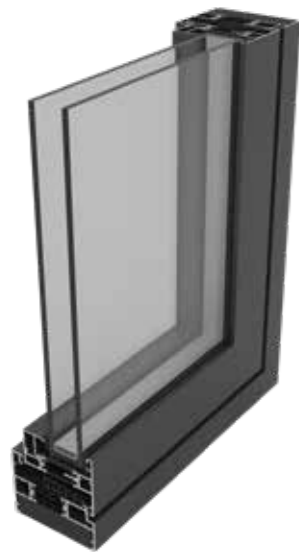


➤ 58BW THERMAL PROFILE





58BW ST FLUSH HI Window



The 58BW ST Flush window combines minimal sightlines of the ST system with all the best features of the tried and trusted 58BW range: advanced performance, versatility and security.

With a choice of three slim sashes and a range of configuration options, the flush finish and slimmer sightlines of the 58BW ST Flush make this the perfect choice for contemporary new-build and refurbishment projects.

A double rebate provides market-leading weather performance, even in more exposed locations, and the 58BW ST Flush utilises common hardware with the existing 58BW and Heritage ST window ranges to ensure it can withstand a range of weather conditions.

The 58BW ST Flush shares the same sashes, features and hardware with the 70mm frame option for the 58BW suite, making it quicker and easier to fabricate with just three new profiles.

DESIGN FEATURES

- ▶ Advanced weather performance – features like the double rebate, and friction stays on side-hung windows offer protection against bad weather conditions
- ▶ Slimmer sightlines – 45mm ultra-slim sash suits a range of property styles
- ▶ Unique polyamide thermal break design to improve thermal performance
- ▶ Certified under the Secured by Design scheme
- ▶ Tested to PAS 24

OPTIONS

- ▶ Open-out sashes including top and side-hung.
- ▶ The flush shadow line can be complimented with a choice of flat, putty line or stepped edge (crittal style) vent styles to suit the property
- ▶ Available in a range of standard and RAL colours.
- ▶ Stock offer – readily available on a 5-day lead time in colours 9910HG, 7016M, and 9005M as well as dual colour white/grey and white/black.

SPECIFICATIONS

Performance and accreditations	58BW ST FLUSH HI
U-Value (Double Glazing)	1.4 W/m ² K
U-Value (Triple Glazing)	1.0 W/m ² K
Window Energy Rating (WER)	A - B
BRE Green Guide Rating	A rated
Air Permeability	Class 4 (600 Pa)
Water Tightness	Class E1500 (1500 Pa)
Wind Resistance	Class E2400 (2400 Pa)
Security	PAS 24 & SBD
3rd Party Certification Q-Mark	✓

System

Depth	58 & 70mm
-------	-----------

Configurations

Opening	Open-Out
Top hung	✓
Side hung	✓
Bottom hung	✓
Fixed light	✓
Multi-light	✓
French casement	✓

Size and weight limits

Top Hung	
Max Size (mm)	1436w x1336h
Min. Size	386w x 336h
Max Weight	40kg
Side Hung	
Max Size (mm)	736w x 1436h
Min. Size	336w x 386h
Max Weight	24kg
Fixed Light	
Max Size (mm)	-
Min. Size	-
Max Weight	250kg

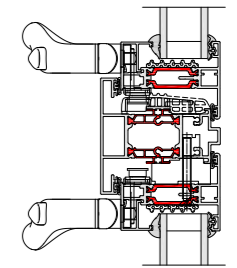
System Features

Frame depth	58mm and 70mm
Dual colour option	✓
Multi-point locking	✓
Glazing options	Internal and external
Glazing thickness	24mm - 32mm
Sightline (Frame to Vent)	66mm
Sightline (Vent to Mullion)	81mm
Sightline (Fixed Light)	43mm

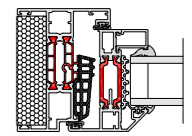
CAD CROSS SECTIONS AND THERMAL PROFILE

Additional details are available on request.

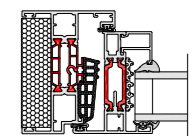
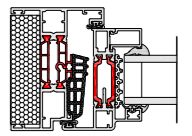
▶ 58BW ST FLUSH HI FRENCH CASEMENT



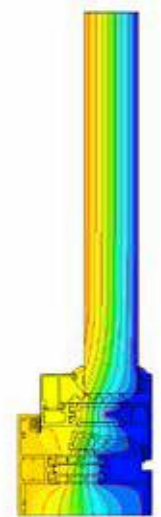
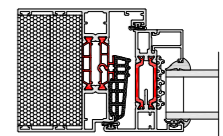
▶ 58BW ST FLUSH HI JAMB SECTION 1



▶ 58BW ST FLUSH HI JAMB SECTION 2



▶ 58BW ST FLUSH HI THERMAL PROFILE



**Glazing thickness: Other thicknesses may be possible dependant on profile combinations specified. Fabricators should refer to AluK technical manual glazing section for details.

58BW ST HI Steel Replacement System



SQUARE



PUTTY LINE



STEPPED EDGE

Ideal for projects where planning or design requires the installation of sympathetic materials, our 58BW ST HI Steel Replacement Window System provides the look of steel with the benefits of aluminium. Designed to replace and complement existing steel windows, the range has been specifically developed for use on listed buildings, warehouses and similar buildings, where steel windows have always traditionally been fitted.

Available in a wide range of styles including Top Hung, Side Hung, Fixed Light and French Casement, the system cleverly replicates the narrow sight lines associated with steel windows whilst providing superior performance and security. The system also includes hardware that is sympathetic to traditional steel window designs.

DESIGN FEATURES

- › Slim sightlines to match existing steel windows
- › Internally and externally beaded for ease of site glazing on high-rise applications
- › Unique polyamide thermal break design to improve performance
- › Integrated deep head profiles for ease of trickle ventilation
- › Accommodates standard hardware including friction stays and shoot bolt locking
- › Certified under the Secured By Design scheme
- › Ideal for Heritage, Listed Buildings and steel window replacements

OPTIONS

- › Accommodates up to 32mm glazing units for thermal and acoustic performance
- › Casement clips available for easy fit and removal of dummy vents
- › Dedicated fixing straps for ease of installation
- › Four different sash profiles to achieve design and planning permission requirements
- › Available in single or dual colour polyester powder coating, texture and anodised finishes



SPECIFICATIONS

Performance and accreditations	58BW ST HI
U-Value (Double Glazing) (Ug: 1.0 W/m²K)	1.4 W/m²K
U-Value (Triple Glazing) (Ug: 0.7 W/m²K)	1.1 W/m²K
Window Energy Rating (WER)	A - B
BRE Green Guide Rating	A rated
Air Permeability	Class 4 (600 Pa)
Water Tightness	Class E1500 (1500 Pa)
Wind Resistance	Class E2400 (2400 Pa)
Security	PAS 24
3rd Party Certification Q-Mark	✓

System	
Depth	58mm & 70mm

Configurations	
Opening	Open-Out
Top Hung	✓
Side Hung	✓
Bottom Hung	✓
Fixed Light	✓
Multi Light	✓

Size and weight limits

Top Hung	
Max Size (mm)	1436w x 1336h
Min. Size	386w x 336h
Max Weight	40kg

Side Hung	
Max Size (mm)	736w x 1436h
Min. Size	336w x 386h
Max Weight	24kg

Bottom Hung	
Max Size (mm)	-
Min. Size	-
Max Weight	-

Fixed Light	
Max Size (mm)	-
Min. Size	-
Max Weight	250kg

Glazing	
Glazing Options	Internal & External
Glazing Thickness**	24mm-32mm

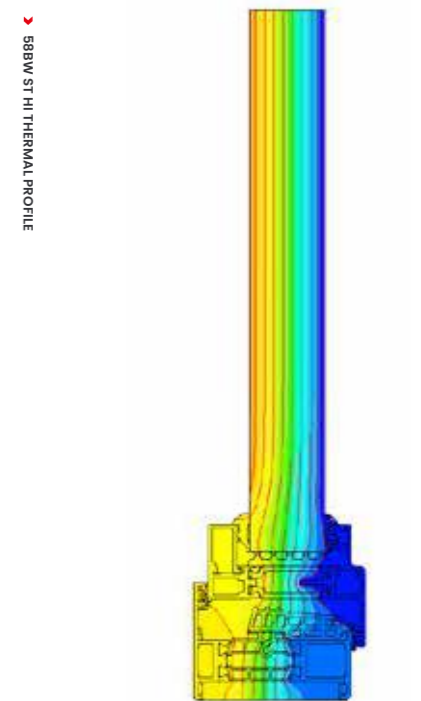
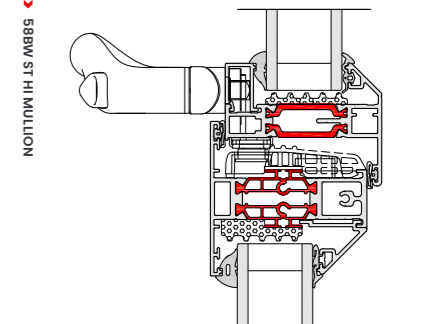
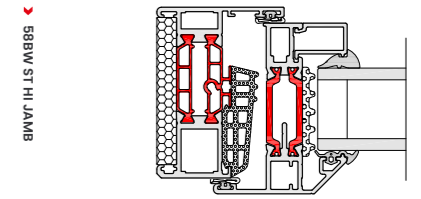
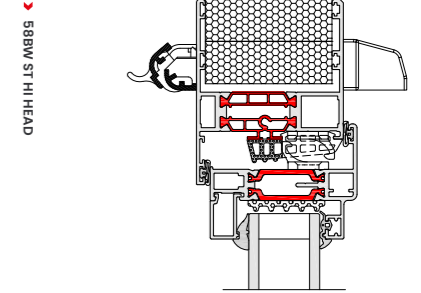
System Features	
Single Colour	✓
Dual Colour	✓
Textured Finish	✓
Anodised Finish	✓
Multi-Point Locking	✓
Sightline (Frame To Vent)	66mm
Sightline (Vent To Mullion)	81mm
Sightline (Fixed Light)	43mm

Aesthetics	
Putty Line	✓
Stepped Edge	✓
Square	✓
Exterior Glazed Chamfer	✓

**Glazing thickness: Other thicknesses may be possible dependant on profile combinations specified. Fabricators should refer to Aluk technical manual glazing section for details.

CAD CROSS SECTIONS AND THERMAL PROFILE

Additional details are available on request.



58BW ST Heritage Window

➤ SQUARE



➤ PUTTY LINE



➤ STEPPED EDGE



The look of steel, the benefits of aluminium. A win-win for designers and homeowners alike. Featuring industry-leading build quality, our 58BW ST aluminium windows are an ideal replacement for existing steel windows.

In addition to impressive high thermal and acoustic performance, the design also replicates the minimal sightlines associated with steel windows, whilst providing superior performance and security.

DESIGN FEATURES

- Certified under the Secured By Design scheme
- Tested to PAS 24
- Green guide rated A
- Integrated deep head profiles for ease of trickle ventilation
- Unique polyamide thermal break design to improve thermal performance
- Slim sightlines to match existing steel window
- Internally beaded for ease of glazing on highrise projects

OPTIONS

- 58mm or 70mm frame depth to accommodate varying types of applications
- Internally or externally glazed
- Glazing 25mm – 28mm
- Available for Lifetime Homes (LFT)
- Available in a range of single or dual colour and anodised finishes
- Available in the following aesthetics: Stepped Edge, Square and Putty Line
- Available in the following configurations: top hung, side hung, bottom hung, fixed light, multi-light and French casement
- Double headed option allows for internal glazing without the use of dummy vents
- Accommodates standard hardware

SPECIFICATIONS

Performance* and accreditations

U-Value (Double Glazing) (Ug: 1.0 W/m²K)	1.5 W/m²K
U-Value (Triple Glazing) (Ug: 0.7 W/m²K)	1.2 W/m²K
Window Energy Rating (WER)	A – B
BRE Green Guide Rating	A rated
Air Permeability	Class 4 (600 Pa)
Water Tightness	Class 9a (600 Pa)
Wind Resistance	Class E2400 (2400 Pa)
Acoustic Performance	Rw (C;Ctr) 43 (-2;-5) dB
Security	PAS 24 & SBD
3rd Party Certification Q-Mark	✓

System

Depth	58mm & 70mm
-------	-------------

Configurations

Opening	Open-Out
Top Hung	✓
Side Hung	✓
Bottom Hung	✓
Fixed Light	✓
Multi-Light	✓

Size and weight limits

Top Hung	
Max Size (mm)	1400w x 1200h
Min. Size (mm)	350w x 250h
Max Weight	35kg
Side Hung	
Max Size (mm)	700w x 1400h
Min. Size (mm)	300w x 350h
Max Weight	26kg
Bottom Hung	
Max Size (mm)	-
Min. Size (mm)	-
Max Weight	50kg (2 hinges)
Fixed Light	
Max Size (mm)	-
Min. Size (mm)	-
Max Weight	250kg

Glazing

Glazing Options	Internal & external
Glazing Thickness**	25mm-28mm

System Features

Single Colour	✓
Dual Colour	✓
Textured Finish	✓
Anodised Finish	✓
Multi-Point Locking	✓
Sightline (Frame To Vent)	66mm
Sightline (Vent To Mullion)	79mm
Sightline (Fixed Light)	43mm

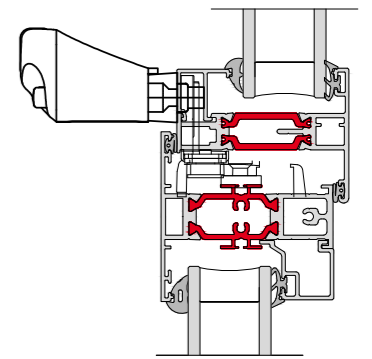
* Performance data based on CEN size for Building Regulations. For full test performance details please contact Technical Services. Aluk recommends checking all system performance for any scheme prior to use.

**Glazing thickness: Other thicknesses may be possible dependant on profile combinations specified. Fabricators should refer to Aluk technical manual glazing section for details.

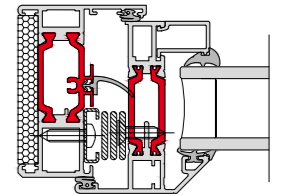
CAD CROSS SECTIONS AND THERMAL PROFILE

Additional details are available on request.

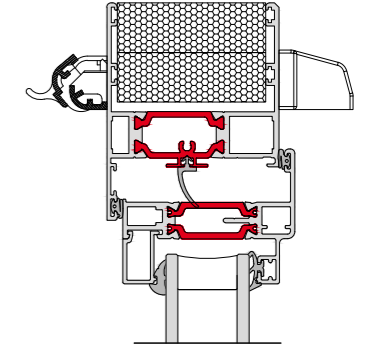
➤ 58BW ST FLAT



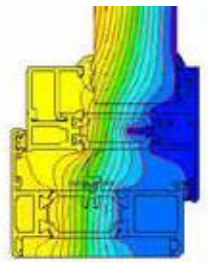
➤ 58BW ST JAMB



➤ 58BW ST HEAD



➤ 58BW ST THERMAL PROFILE



Anything but run of the mill

Grade II listed, Harby Mill on the borders of Nottinghamshire and Lincolnshire was a working tower windmill right up until the 1930s.

An iconic local landmark, it was built in 1877 to replace a wooden original. Once milling on the site ended though, the building lost its sails and gradually fell into a state of disrepair. That was until it was rescued 30 years ago and converted into a quirky and luxurious five-storey home.

The most recent additions are AluK 58BW Heritage aluminium windows and 58BD doors, which have been installed throughout.

The 58BW ST Heritage windows were judged to be a better match to the cast iron originals in the mill tower than the soft wood products which were being replaced, and they were accepted and approved by both the local conservation officer and the planning committee after a detailed reporting process.

Designed primarily to replace steel windows, the 58BW ST profiles feature traditional square sections and sightlines of just 43mm in a fixed light. At Harby Mill, they were specified in RAL1015 Light Ivory finish and, for the 11 windows installed in the tower itself, with matching square glazing bars.

All of the windows and doors feature 24mm double glazing which has transformed the energy efficiency of the property, as well as providing reassuring levels of security over the timber windows they replaced.

AluK's 58BW window system allows fabricators to manufacture a wide range of traditional and contemporary window designs and configurations using a core range of profiles and ancillaries. This makes it a hugely versatile and cost-effective option for specifiers and consumers.





58BW TBT HI Window



Offering exceptional child safety and seamless operation, our tilt before turn windows are an ever-popular choice for both multi-residential and light commercial applications.

Made from high performance aluminium these sustainable systems are inherently strong and lightweight. They're also an ideal solution for high-rise buildings where internal glazing and ease of cleaning are essential.

DESIGN FEATURES

- › Certified under the Secured By Design scheme
- › Tested to PAS 24
- › Green guide rated A
- › Integrated deep head profiles for ease of trickle ventilation
- › Unique polyamide thermal break design to improve thermal performance

OPTIONS

- › Glazing 24mm – 40mm
- › Available in a range of single or dual colour and anodised finishes
- › Available in the following aesthetics: Bay, Contemporary and Square
- › Available in the following configurations: tilt-before-turn, side hung, fixed light and multi-light
- › Available for Lifetime Homes (LFT)

SPECIFICATIONS

Performance and accreditations	58BW TBT HI
U-Value (Double Glazing)	1.4 W/m ² K
U-Value (Triple Glazing)	1.2 W/m ² K
Window Energy Rating (WER)	B – C
BRE Green Guide Rating	A rated
Air Permeability	Class 4 (600 Pa)
Water Tightness	Class 8a (450Pa)
Wind Resistance	Class E2400 (2400 Pa)
Security	PAS 24
3rd Party Certification Q-Mark	✓

System

Depth	58 & 70mm
-------	-----------

Configurations

Opening	Open-in
Top Hung	-
Side Hung	✓
Bottom Hung	✓
Tilt & Turn	✓
Fixed Light	✓
Multi-Light	✓
French Casement	-

Size and weight limits

Side Hung

Max Size (mm)	1725mm x 2300mm
Min. Size	380mm x 575mm / 480mm x 375mm
Max Weight	150kgs

Bottom Hung

Max Size (mm)	1725w x 2300mm
Min. Size	380mm x 575mm / 480mm x 375mm
Max Weight	150kgs

Tilt & Turn

Max Size (mm)	1725w x 2300mm
Min. Size (mm)	380mm x 575mm / 480mm x 375mm
Max Weight	150 kgs

Fixed Light

Max Weight	250kg
------------	-------

Glazing

Glazing Options	Internal Bead
Glazing Thickness **	24mm – 40mm

System Features

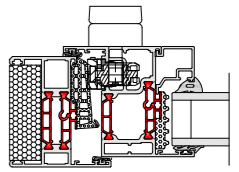
Single Colour	✓
Dual colour option	✓
Textured Finish	✓
Anodised Finish	✓
Multi-Point Locking	✓
Lifetime Homes	✓
Sightline (Frame to Vent)	86mm
Sightline (Vent to Mullion)	100mm
Sightline (Fixed Light)	43mm

**Glazing thickness: Other thicknesses may be possible dependant on profile combinations specified. Fabricators should refer to AluK technical manual glazing section for details.

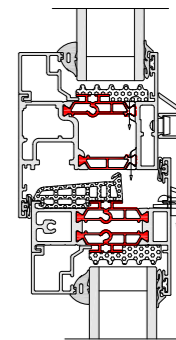
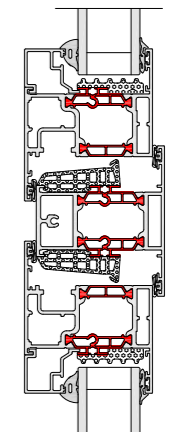
CAD CROSS SECTIONS AND THERMAL PROFILE

Additional details are available on request.

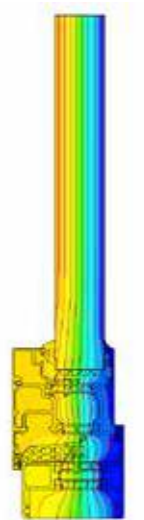
› 58BW TBT HI HEAD



› 58BW TBT HI MULLION



› 58BW TBT HI THERMAL PROFILE





58BW TBT Window

Offering exceptional child safety and seamless operation, our tilt before turn windows are an ever-popular choice for both multi-residential and light commercial applications.

Made from high performance aluminium these sustainable systems are inherently strong and lightweight. They're also an ideal solution for high-rise buildings where internal glazing and ease of cleaning are essential.



DESIGN FEATURES

- › Certified under the Secured By Design scheme
- › Tested to PAS 24
- › Integrated deep head profiles for ease of trickle ventilation
- › Unique polyamide thermal break design to improve thermal performance

OPTIONS

- › Glazing 24mm – 40mm
- › Available in a range of single or dual colour and anodised finishes
- › Available in the following aesthetics: Bay, Contemporary and Square
- › Available in the following configurations: tilt-before-turn, side hung, fixed light and multi-light
- › Available for Lifetime Homes (LFT)

SPECIFICATIONS

Performance* and accreditations

U-Value (Double Glazing) (Ug: 1.0 W/m²K)	1.5 W/m²K
U-Value (Triple Glazing) (Ug: 0.7 W/m²K)	1.3 W/m²K
Window Energy Rating (WER)	B - C
Air Tightness	Class 4 (600 Pa)
Water Tightness	Class 8a (450 Pa)
Wind Resistance	Class E2400 (2400 Pa)
Acoustic Performance	Rw (C;Ctr) 44 (-1;-4) dB
Security	PAS 24 & SBD
3rd Party Certification Q-Mark	✓

System

Depth	58mm & 70mm
-------	-------------

Configurations

Opening	Open-In
Top Hung	x
Side Hung	✓
Bottom Hung	✓
Tilt & Turn	✓
Fixed Light	✓
Multi-Light	✓
French Casement	x

Size and weight limits

Side Hung

Max Size (mm)	1725w x 2300h
Min. Size (mm)	380w x 575h / 480w x 375h
Max Weight	150kg

Bottom Hung

Max Size (mm)	1725w x 2300h
Min. Size (mm)	380w x 575h / 480w x 375h
Max Weight	150kg

Tilt & Turn

Max Size (mm)	1725w x 2300h
Min. Size (mm)	380w x 575h / 480w x 375h
Max Weight	150kg

Fixed Light

Max Weight	250kg
------------	-------

Glazing

Glazing Options	Internal Bead
Glazing Thickness	24mm-40mm

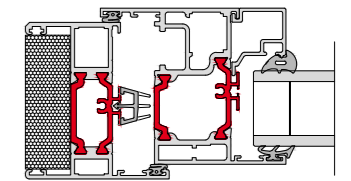
System Features

Single Colour	✓
Dual Colour	✓
Textured Finish	✓
Anodised Finish	✓
Multi-Point Locking	✓
Lifetime Homes	✓
Sightline (Frame to Vent)	86mm
Sightline (Vent to Mullion)	100mm
Sightline (Fixed Light)	43mm

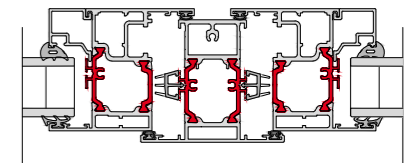
CAD CROSS SECTIONS AND THERMAL PROFILE

Additional details are available on request.

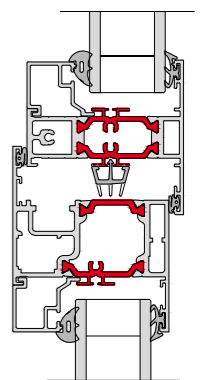
› 58BW OPEN-IN JAMB DETAIL



› 58BW OPEN-IN MULLION DETAIL



› 58BW OPEN-IN TRANSOM DETAIL



* Performance data based on CEN size for Building Regulations. For full test performance details please contact Technical Services. AluK recommends checking all system performance for any scheme prior to use.



Top Swing Reversible Window



Easy to clean and effortless to operate, our ever-popular top swing reversible windows increase thermal performance, improve safety and exceed modern building design performance standards.

Ideal for use in high-rise structures, the windows open an impressive 180°, allowing completely pain-free pane cleaning. The system does not encroach inside the building, as the mechanism allows the opening sash to completely rotate on itself whilst remaining outside the building structure.

DESIGN FEATURES

- › Certified under the Secured By Design scheme
- › Tested to PAS 24
- › Green guide rated A
- › Integrated deep head profiles for ease of trickle ventilation
- › Unique polyamide thermal break design to improve thermal performance
- › A clean, flat appearance to give a true contemporary aesthetic
- › Design allows the windows to be pivoted without intruding the internal building line

OPTIONS

- › Glazing 24mm – 28mm
- › Available in a range of single or dual colour and anodised finishes
- › Available in the following aesthetics: Bay, Contemporary and Chamfered
- › Available in the following configurations: top swing, side swing, fixed light and multi-light
- › Dedicated fixing straps for ease of installation
- › Full range of customisable hardware available

SPECIFICATIONS

Performance* and accreditations

U-Value (Double Glazing) (Ug: 1.0 W/m²K)	1.7 W/m²K
BRE Green Guide Rating	A Rated
Air Permeability	Class 4 (600 Pa)
Water Tightness	Class 6a (250 Pa)
Wind Resistance	Class A5 (2000 Pa)
Security	PAS 24 & SBD
3rd Party Certification Q-Mark	✓

SYSTEM

Depth	70mm
-------	------

Configurations

Opening	Open-Out
Top Swing	✓
Side Swing	✓
Fixed Light	✓
Multi-Light	✓

Size and weight limits

Top Swing	
Max Size (mm)	1400w x 1400h
Min. Size (mm)	300w x 504h
Max Weight	60kg
Fixed Light	
Max Weight	250kg

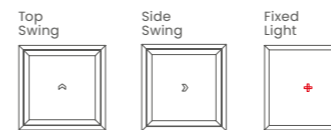
Glazing

Glazing Options	Internal
Glazing Thickness	24mm-28mm

System Features

Single Colour	✓
Dual Colour	✓
Textured Finish	✓
Anodised Finish	✓
Multi-Point Locking	✓
Sightline (Frame To Vent)	103mm
Sightline (Vent To Mullion)	161mm

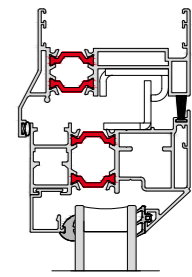
CONFIGURATIONS



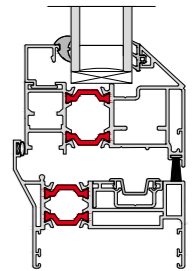
CAD CROSS SECTIONS AND THERMAL PROFILE

Additional details are available on request.

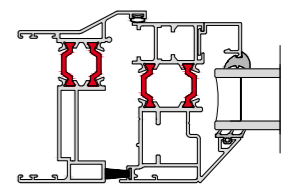
› TSR HEAD



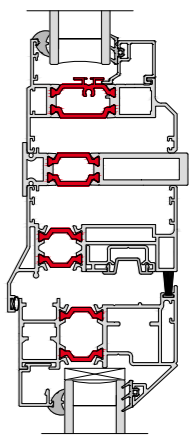
› TSR CILL



› TSR JAMB



› TSR TRANSOM



› TSR THERMAL PROFILE



* Performance data based on CEN size for Building Regulations. For full test performance details please contact Technical Services. AluK recommends checking all system performance for any scheme prior to use.

Door systems

Engineered to integrate seamlessly with our window system range, our aluminium door systems remain our most popular products and provide unrivalled safety, security and installation simplicity.

Each door system has its own distinct look and feel, offering varying levels of performance, profile depth and glazing area.

However, while our designs may differ you'll find our materials and manufacturing processes are as reliable as ever. Our fabricating partners can benefit from a 10 year guarantee.

In addition to meeting the needs of every application type, our doors also support the current industry trend for refurbishment over replacement.

This allows fabricators and installers to provide the additional light and space their customers want, in the most fitting way possible.





58BD Entrance Door



Available in a wide range of styles and formats, our stylish aluminium entrance door system is suitable for both light and medium-duty use.

Designed with security and flexibility front of mind, every door in the range is available in single and double configurations making them ideal for almost any application.

DESIGN FEATURES

- › Certified under the Secured By Design scheme
- › Tested to PAS 24
- › Multi-point locking mechanism
- › Designed to incorporate standard and security hardware using the same prep detail
- › Cloaking feature conceals lock and prevents any access to locking points

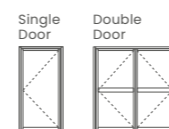
OPTIONS

- › Glazing 24mm – 40mm
- › 58mm or 70mm frame depth to accommodate varying types of applications
- › Low threshold option for Part M – Building regulation
- › Available in a range of single or dual colour and anodised finishes
- › Available for new build or refurbishment projects
- › Available in single or double door configuration

SPECIFICATIONS

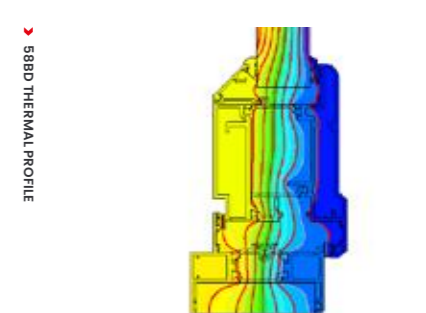
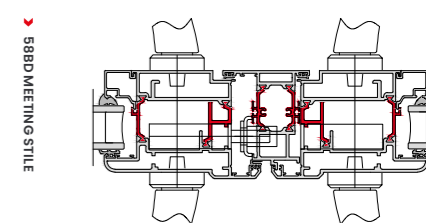
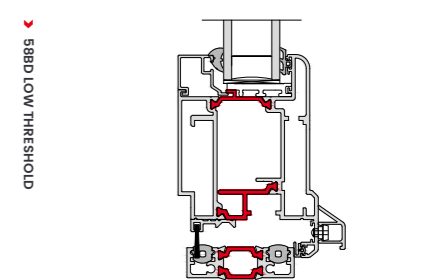
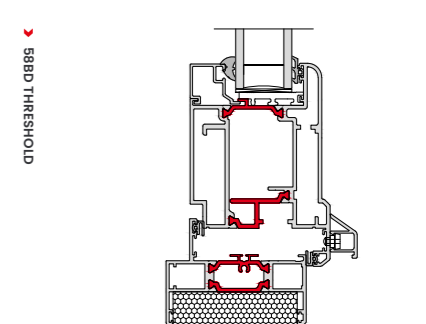
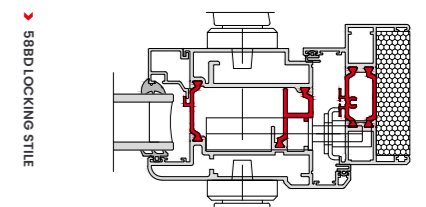
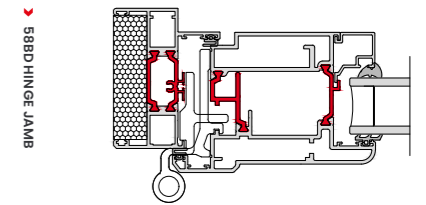
	Single Open-In	Single Open-Out	Double Open-In	Double Open-Out
Performance* and accreditations				
U-Value (Double Glazing) (Ug: 1.0 W/m²K)	1.7 W/m²K	1.7 W/m²K	1.7 W/m²K	1.7 W/m²K
U-Value (Triple Glazing) (Ug: 0.7 W/m²K)	1.4 W/m²K	1.4 W/m²K	1.5 W/m²K	1.5 W/m²K
Air Permeability	Class 4 (600 Pa)	Class 4 (600 Pa)	Class 2 (300 Pa)	Class 2 (300 Pa)
Water Tightness	Class 3a (100 Pa)	Class 7a (300 Pa)	Class 7a (300 Pa)	Class 9a (600 Pa)
Wind Resistance	Class A3 (1200 Pa)	Class AE2400 (2400 Pa)	Class A2400 (2400 Pa)	Class A2400 (2400 Pa)
Building Regulations Part M Compliant	✓	✓	✓	✓
Security	PAS 24 & SBD	PAS 24 & SBD	PAS 24 & SBD	PAS 24 & SBD
Durability EN1191 Category	50,000 Cycles	50,000 Cycles	50,000 Cycles	50,000 Cycles
3rd Party Certification Q-Mark	✓	✓	✓	✓
System				
Depth	58mm - 70mm	58mm - 70mm	58mm - 70mm	58mm - 70mm
Size and weight limits				
Maximum Door Size (mm)	1200w x 2400h	1200w x 2400h	2400w x 2400h	2400w x 2400h
Maximum Door Weight	3 Hinges 67.5kg 4 Hinges 90kg	3 Hinges 67.5kg 4 Hinges 90kg	3 Hinges 67.5kg 4 Hinges 90kg	3 Hinges 67.5kg 4 Hinges 90kg
Glazing				
Glazing Thickness	24mm-40mm	24mm-40mm	24mm-40mm	24mm-40mm
System Features				
Single Colour	✓	✓	✓	✓
Dual Colour	✓	✓	✓	✓
Textured Finish	✓	✓	✓	✓
Anodised Finish	✓	✓	✓	✓
Thermally Broken	✓	✓	✓	✓
Sightline (Head)	129.5mm	129.5mm	129.5mm	129.5mm
Sightline (Cill)	111mm	111mm	111mm	111mm
Sightline (Jamb)	129.5mm	129.5mm	129.5mm	129.5mm
Sightline (Meeting Stile)	n/a	n/a	209.5mm	209.5mm
Panel Door	✓	✓	✓	✓
Multi-Point Locking	✓	✓	✓	✓
Barrel Hinges	✓	✓	✓	✓
Low Threshold	✓	✓	✓	✓
Applications				
New Build	✓	✓	✓	✓
Refurbishment	✓	✓	✓	✓

CONFIGURATIONS



CAD CROSS SECTIONS AND THERMAL PROFILE

Additional details are available on request.



* Performance data based on CEN size for Building Regulations. For full test performance details please contact Technical Services. Aluk recommends checking all system performance for any scheme prior to use.

58BD Flush Entrance Door

Available in a wide range of styles and formats, our stylish aluminium entrance door system is suitable for both light and medium-duty use.

Designed with security and flexibility front of mind, every door in the range is available in single and double configurations making them ideal for almost any application.

DESIGN FEATURES

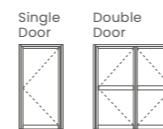
- › Accepts 24mm – 40mm double or triple glazing
- › Max vent weight 90kg
- › Max Frame Height 2160mm
- › Multi-point locking mechanism
- › Available in single and dual colour



SPECIFICATIONS

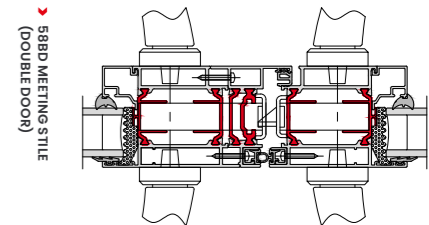
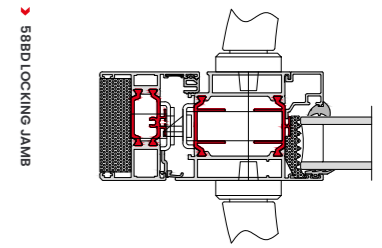
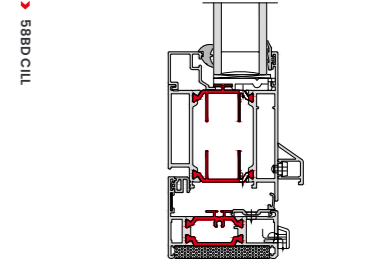
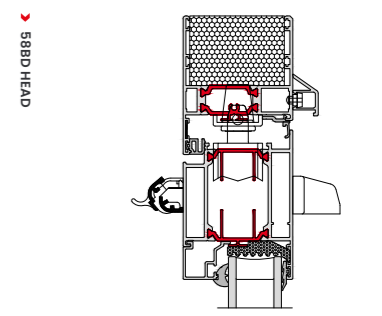
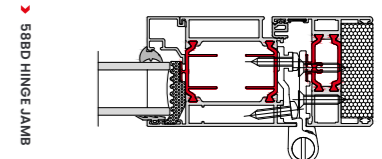
	Single Open-In	Single Open-Out	Double Open-In	Double Open-Out
Performance* and accreditations				
U-Value (Double Glazing) (Ug: 1.0 W/m²K)	1.6 W/m²K	1.7 W/m²K	1.7 W/m²K	1.6 W/m²K
U-Value (Triple Glazing) (Ug: 0.7 W/m²K)	1.4 W/m²K	1.4 W/m²K	1.4 W/m²K	1.4 W/m²K
Air Permeability	Class 2 (300 Pa)	Class 2 (300 Pa)	Class 2 (300 Pa)	Class 1 (150 Pa)
Water Tightness	Class 9a (600 Pa)	Class E1950 (1950 Pa)	Class 4a (150 Pa)	Class 7a (300 Pa)
Wind Resistance	Class A3 (1200 Pa)	Class A3 (1200 Pa)	Class 2 (800 Pa)	Class 2 (800 Pa)
Security	PAS 24 & SBD	PAS 24 & SBD	PAS 24 & SBD	PAS 24 & SBD
Durability EN1191 category	50,000 Cycles	50,000 Cycles	50,000 Cycles	50,000 Cycles
3rd Party Certification Q-Mark	✓	✓	✓	✓
System				
Depth	58mm - 70mm	58mm - 70mm	58mm - 70mm	58mm - 70mm
Size and weight limits				
Maximum Door Leaf Size (mm)	1200w x 2400h	1200w x 2400h	2400w x 2400h	2400w x 2400h
Maximum Door Leaf Weight	2 Hinges 100kg 3 Hinges 125kg 4 Hinges 150kg	2 Hinges 100kg 3 Hinges 125kg 4 Hinges 150kg	2 Hinges 100kg 3 Hinges 125kg 4 Hinges 150kg	2 Hinges 100kg 3 Hinges 125kg 4 Hinges 150kg
Glazing				
Glazing Thickness	24mm-40mm	24mm-40mm	24mm-40mm	24mm-40mm
System Features				
Single Colour	✓	✓	✓	✓
Dual Colour	✓	✓	✓	✓
Textured Finish	✓	✓	✓	✓
Anodised Finish	✓	✓	✓	✓
Thermally Broken	✓	✓	✓	✓
Sightlines	119mm Max	119mm Max	175mm (Meeting Stile)	175mm (Meeting Stile)
Panel Door	✓	✓	✓	✓
Multi-Point Locking	✓	✓	✓	✓
Barrel Hinges	✓	✓	✓	✓
Applications				
New Build	✓	✓	✓	✓
Refurbishment	✓	✓	✓	✓

CONFIGURATIONS



CAD CROSS SECTIONS AND THERMAL PROFILE

Additional details are available on request.



* Performance data based on CEN size for Building Regulations. For full test performance details please contact Technical Services. AluK recommends checking all system performance for any scheme prior to use.

BSC94 Lift & Slide Door



For those looking for effortless operation, look no further than our premium lift and slide door. Its vital statistics are impossible to ignore. Thermal U-Values of 1.5W/m²K (triple glazed). Panel weights of up to 400Kg. Sightlines as little as 45mm.

The list goes on. As do the benefits, including multiple configurations and a wide choice of colour finishes.

DESIGN FEATURES

- › Accepts 20mm – 31mm double glazing
- › Max 400kg panel weight (double bogey)

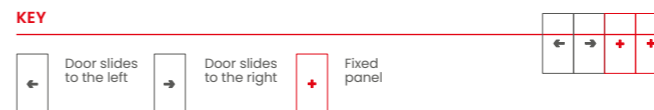
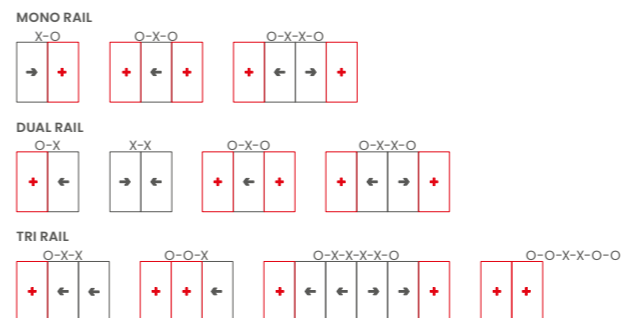
OPTIONS

- › Available as Inline Sliding
- › Slimmer sightline of 45mm available
- › Multiple sliding configurations
- › Mono or Dual rail options
- › Available in single and dual colour
- › Anodised finishes also available
- › Range of hardware and security features

SPECIFICATIONS

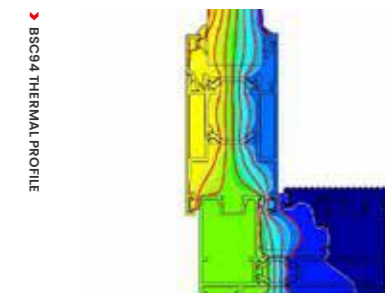
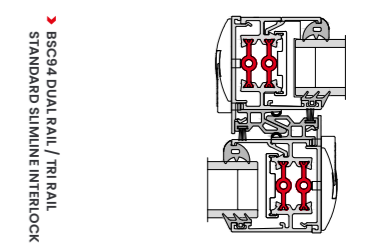
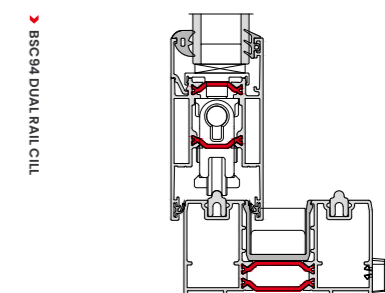
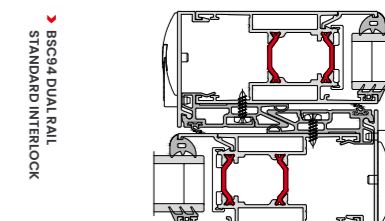
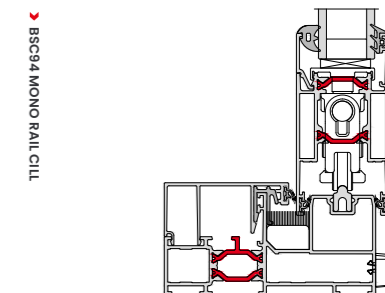
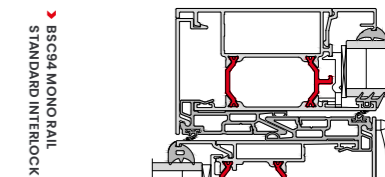
Performance* and accreditations	BSC94	BSC94 SLIM
U-Value (Double Glazing) (Ug = 1.0 W/m²K) (Mono Rail)	1.7 W/m²K	-
U-Value (Triple Glazing) (Ug = 0.7 W/m²K) (Mono Rail)	1.5 W/m²K	-
U-Value (Double Glazing) (Ug = 1.0 W/m²K) (Dual Rail)	1.9 W/m²K	1.9 W/m²K
U-Value (Triple Glazing) (Ug = 0.7 W/m²K) (Dual Rail)	1.7 W/m²K	1.6 W/m²K
BRE Green Guide Rating	C Rated	C Rated
Air Permeability	Class 4 (600 Pa)	Class 4 (600 Pa)
Water Tightness	Class 7a (300 Pa)	Class 7a (300 Pa)
Wind Resistance	C3 (1200 Pa)	C3 (1200 Pa)
Acoustic Performance	-	-
System		
Depth	94mm-155mm	94mm-155mm
Configurations		
Opening	Lift & Slide	Lift & Slide
Mono Rail	✓	x
Dual Rail	✓	✓
Tri Rail	✓	x
Size and weight limits		
Max Frame Height	3000mm	3000mm
Max Vent Width	2000mm	2000mm
Max Vent Weight	400kg	400kg
Glazing		
Glazing Options	Internal	Internal
Glazing Thickness	20mm-31mm	20mm-31mm
System Features		
Single Colour	✓	✓
Dual Colour	✓	✓
Textured Finish	✓	✓
Anodised Finish	✓	✓
Multi-Point Locking	✓	✓
Sightlines (Interlock)	100mm	45mm
Sightlines (Cill)	130.5mm	130.5mm
Sightlines (Head)	130.5mm	130.5mm
Sightlines (Jamb)	130.5mm	130.5mm

CONFIGURATIONS



CAD CROSS SECTIONS AND THERMAL PROFILE

Additional details are available on request.



* Performance data based on CEN size for Building Regulations. For full test performance details please contact Technical Services. ALUK recommends checking all system performance for any scheme prior to use.



BSC94

In-line Sliding Door



Modern, versatile and customisable, the BSC94 In-line Sliding Door combines high performance with contemporary design to provide a reliable aluminium door system for almost any architectural project. Manufactured to the highest UK standards, this multi-configuration system can achieve thermal U-Values of 1.4W/m²K (triple glazed mono rail) and sightlines of as little as 45mm.

In addition to mono, dual and triple rail options, a comprehensive range of colours and anodised finishes is available for the system. The BSC94 also features an anti bimetal polyamide strip to allow for varying expansion rates, ensuring the future integrity of your design.

DESIGN FEATURES

- › Accepts 20mm – 31mm double glazing
- › Max 400kg panel weight
- › Certified under the Secured By Design scheme
- › Tested to PAS 24
- › Anti bi-metal polyamide strip to allow for varying expansion rates

OPTIONS

- › Available as Lift & Slide
- › Slimmer sightline of 45mm available
- › Multiple sliding configurations
- › Mono, Dual or Tri rail options
- › Available in single and dual colour
- › Anodised finishes also available
- › Range of hardware and security features

SPECIFICATIONS

Performance* and accreditations	BSC94	BSC94 SLIM
U-Value (Double Glazing) (U _g = 1.0 W/m ² K) (mono rail)	1.6 W/m ² K	-
U-Value (Triple Glazing) (U _g = 0.7 W/m ² K) (mono rail)	1.4 W/m ² K	-
U-Value (Double Glazing) (U _g = 1.0 W/m ² K) (dual Rail)	1.7 W/m ² K	1.7 W/m ² K
U-Value (Triple Glazing) (U _g = 0.7 W/m ² K) (dual Rail)	1.5 W/m ² K	1.5 W/m ² K
BRE Green Guide Rating	C Rated	C Rated
Air Permeability	Class 4 (600 Pa)	Class 4 (600 Pa)
Water Tightness	Class 7a (300 Pa)	Class 7a (300 Pa)
Wind Resistance	C3 (1200 Pa)	C3 (1200 Pa)
Acoustic Performance	Rw (C;Ctr) 36 (-1;-3) dB**	-
Security	PAS 24 & SBD	x
System		
Depth	94mm-155mm	94mm-155mm
Configurations		
Opening	Inline Sliding	Inline Sliding
Mono Rail	✓	x
Dual Rail	✓	✓
Tri Rail	✓	✓
Size and weight limits		
Max Frame Height	3000mm	3000mm
Max Vent Width	2000mm	2000mm
Max Frame Height With Security Features	2600mm	x
Max Vent Weight	400kg	400kg
Glazing		
Glazing Options	Internal	Internal
Glazing Thickness	20mm-31mm	20mm-31mm
System Features		
Single Colour	✓	✓
Dual Colour	✓	✓
Textured Finish	✓	✓
Anodised Finish	✓	✓
Multi-Point Locking	✓	✓
Sightlines (Interlock)	85mm	45mm
Sightlines (Cill)	115.5mm	115.5mm
Sightlines (Head)	115.5mm	115.5mm
Sightlines (Jamb)	115.5mm	115.5mm

CONFIGURATIONS

MONO RAIL



DUAL RAIL



TRI RAIL



KEY

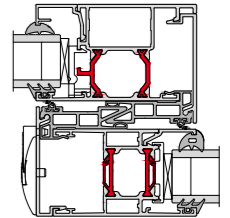


* Performance data based on CEN size for Building Regulations. For full test performance details please contact Technical Services. AluK recommends checking all system performance for any scheme prior to use.

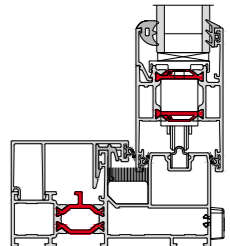
CAD CROSS SECTIONS AND THERMAL PROFILE

Additional details are available on request.

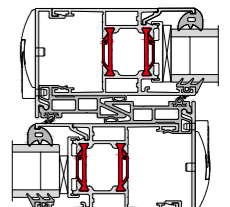
› BSC94 MONORAIL INTERLOCK



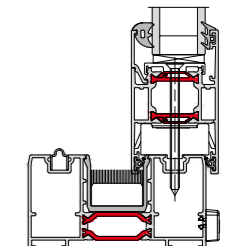
› BSC94 MONO RAIL CILL



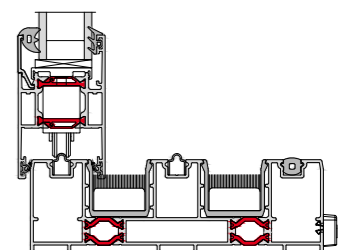
› BSC94 DUAL RAIL / TRI RAIL STANDARD INTERLOCK



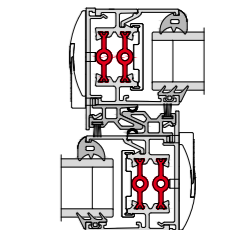
› BSC94 DUAL RAIL CILL



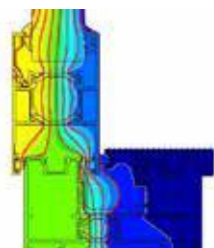
› BSC94 TRI RAIL CILL



› BSC94 DUAL RAIL / TRI RAIL STANDARD SUNLINE INTERLOCK



› BSC94 THERMAL PROFILE





BSF70 HI Bifold Door



The BSF70 HI Folding Door System gives maximum control over the style and operation of the doors. Multiple panels can be added to accommodate the unique design specifications of the building, with the option to open-in or out as required. The system's narrow profile ensures that maximum glazing is achieved, flooding spaces with natural light.

In addition to the inherent strength of aluminium, the BSF70 HI combines security hinges and locking mechanisms with a unique heavy-duty roller design to provide the security and reliability demanded in high traffic applications. The system also incorporates a pop out T-handle design that allows for square flush stacking panels when doors are fully open.



DESIGN FEATURES

- › Internally beaded with a softline or square detail to all external doors and panels
- › Four stainless steel wheels ensures smooth and consistent operation
- › Unique, flush line pop-out handle that allows maximum door opening and square stacking of panels
- › Tested to PAS 24 and certified under the Secured By Design scheme

OPTIONS

- › Heavy-duty roller options
- › Chamfered and square bead options
- › Low threshold option that can be configured to achieve DDA and Part M compliance
- › Doors and panels can be used in a variety of configurations, style and design
- › All configurations are available in both open-in and open-out options
- › Full range of bespoke hardware available
- › Glazing sizing range of 24mm-40mm
- › Available in single or dual colour polyester powder coating, texture and anodised finishes

SPECIFICATIONS

Performance and accreditations	BSF70 HI	BSF70 HD HI
U-Value (Double Glazing) (Ug: 1.0 W/m²K)	1.4 W/m²K	1.4 W/m²K
U-Value (Triple Glazing) (Ug: 0.7 W/m²K)	1.1 W/m²K	1.1 W/m²K
Air Permeability (Standard Threshold)	Class 4 (600 Pa)	Class 4 (600 Pa)
Water Tightness (Standard Threshold)	Class 9a (600 Pa)	Class 9a (600 Pa)
Wind Resistance	Class AE2400 (2400 Pa)	Class AE2400 (2400 Pa)
Security	PAS 24 & SBD	PAS 24 & SBD
Cycle Testing	50,000	50,000
3rd Party Certification Q-Mark	✓	✓

System

Depth	70mm	70mm
-------	------	------

Configurations

Opening	Open-In & Open-Out	Open-In & Open-Out
---------	--------------------	--------------------

Size and weight limits

Max Leaf Height	2400mm std/3000**mm	2400mm std/3000**mm
Max Leaf Width	1200mm	1200mm
Max Vent Weight	100kg	130kg

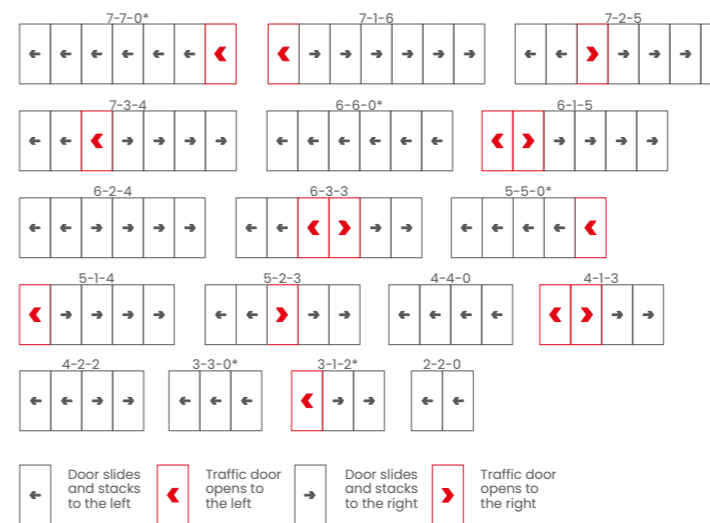
Glazing

Glazing Options	Internal Bead	Internal Bead
Glazing Thickness	24mm-40mm	24mm-40mm

System Features

Single Colour	✓	✓
Dual Colour	✓	✓
Textured Finish	✓	✓
Anodised Finish	✓	✓
Multi-Point Locking	✓	✓
Sightline (Head)	110mm	110mm
Sightline (Cill)	130mm	130mm
Sightline (Jamb)	110mm	110mm
Sightline (Meeting Stile)	140mm	140mm

CONFIGURATIONS



OTHER OPTIONS AVAILABLE

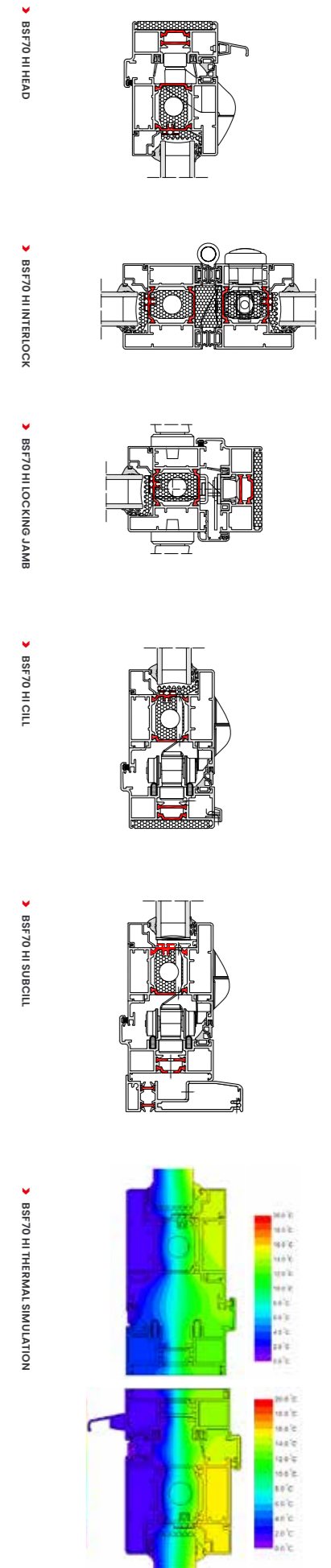


*Opposite handling available on all configurations. For more options, refer to the Technical Manual.

**The maximum height and panel width for the BSF70 HI Folding Sliding Door System are co-dependent and dictated by hardware limitation and the design wind load where the doors are being installed. Based on the site design wind load that the doors are subjected to this will influence the maximum height and width [per panel] to which the doors can be manufactured.

CAD CROSS SECTIONS AND THERMAL PROFILE

Additional details are available on request.





BSF70 Bifold Door



An intelligent combination of form and function, our highly versatile and market-leading Bi-fold sliding door system gives you maximum control over the style and operation of the doors.

Multiple panels can be added to accommodate the design specifications of your building, with the option to open in or out as required.

The system also boasts a unique flush line pop-out handle that allows for square flush stacking panels when doors are fully open.

DESIGN FEATURES

- › Certified under the Secured By Design scheme
- › Tested to PAS 24
- › Unique, pop-out handle that allows for maximum door opening and panels to stack square
- › Four stainless steel rollers to ensure smooth and consistent operation

OPTIONS

- › Chamfered and square bead options
- › Glazing 28mm – 40mm
- › Available in a range of opening configurations
- › Available with heavy duty rollers; BSF70 HD
- › Available in a range of single or dual colour and anodised finishes
- › Low threshold 15mm step height
- › All configurations available open in and open out
- › Chamfered and square based options
- › Shootbolts top and bottom of the interlock for enhanced security
- › Dedicated bottom bogey guide for consistent operation and enhanced security
- › Double track threshold allowing greater stability

SPECIFICATIONS

Performance* and accreditations	BSF70	BSF70 HD
U-Value (Double Glazing) (Ug: 1.0 W/m²K)	1.6 W/m²K	1.6 W/m²K
U-Value (Triple Glazing) (Ug: 0.7 W/m²K)	1.4 W/m²K	1.4 W/m²K
Air Permeability (Standard Threshold)	Class 4 (600 Pa)	Class 4 (600 Pa)
Water Tightness (Standard Threshold)	Class 9a (600 Pa)	Class 9a (600 Pa)
Wind Resistance	Class AE2400 (2400 Pa)	Class AE2400 (2400 Pa)
Security	PAS 24 & SBD	PAS 24 & SBD
Cycle Testing	50,000	50,000
3rd Party Certification Q-Mark	✓	✓

System

Depth	70mm	70mm
-------	------	------

Configurations

Opening	Open-In & Open-Out	Open-In & Open-Out
---------	--------------------	--------------------

Size and weight limits

Max Leaf Height	2400mm	2400mm
Max Leaf Width	1200mm	1200mm
Max Vent Weight	100kg	130kg

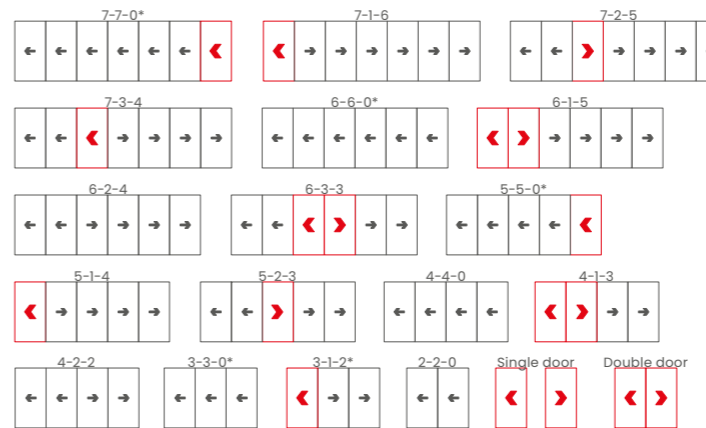
Glazing

Glazing Options	Internal Bead	Internal Bead
Glazing Thickness	24mm-40mm	24mm-40mm

System Features

Single Colour	✓	✓
Dual Colour	✓	✓
Textured Finish	✓	✓
Anodised Finish	✓	✓
Multi-Point Locking	✓	✓
Sightline (Head)	110mm	110mm
Sightline (Cill)	130mm	130mm
Sightline (Jamb)	110mm	110mm
Sightline (Meeting Stile)	140mm	140mm

CONFIGURATIONS



*Opposite handling available on all configurations. For more options, refer to the Technical Manual.

KEY



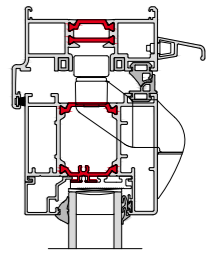
OTHER OPTIONS AVAILABLE



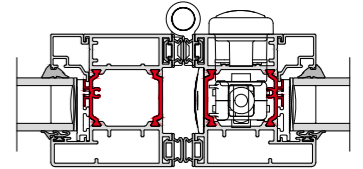
CAD CROSS SECTIONS AND THERMAL PROFILE

Additional details are available on request.

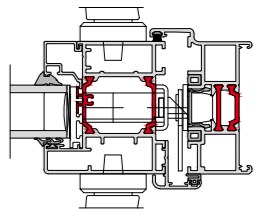
› BSF70 HEAD



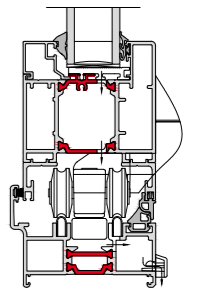
› BSF70 INTERLOCK



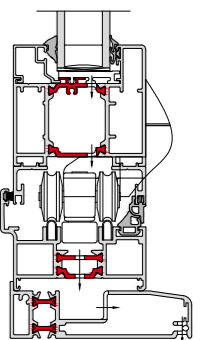
› BSF70 LOCKING JAMB



› BSF70 FACE DRAINAGE



› BSF70 CILL AND SUBCILL



› BSF70 THERMAL PROFILE



* Performance data based on CEN size for Building Regulations. For full test performance details please contact Technical Services. AluK recommends checking all system performance for any scheme prior to use.

Swimming in compliments

In documenting the contemporary renovation and redevelopment of their 1910 5-bedroom property in South Wales, the owners of @ourgranddesign1 have already attracted more than 17500 followers.

While the whole project is impressive, the most likes on the account so far have been on the images of the stunning garden and pool room, surrounded on two complete sides by AluK's iconic BSF70 bi-folds.

The Californian original, which inspired the design, was open on two sides with a cantilevered roof, but the Welsh owners sensibly opted for bi-folding doors on their version - to cope with the vagaries of the UK weather.

Two five-panel BSF70 bi-folds installed on the front of the garden room open out from the centre, while the pool area features a single, nine-panel bi-fold which opens up one way from right to left to create a seamless link between inside and out. There are also two further five-panel BSF70 bi-folds installed at the end of the building and working as a divider between the two separate zones.

The garden and pool room sits at the end of the property's half acre garden and there is even a three metre AluK 58BW fixed light window installed in the newly extended open plan kitchen to frame the view of it.





T: 01291 639 739
E: info.uk@aluk.com

Registered Office:
AluK (GB) Ltd
Newhouse Farm Ind Est
Chepstow
NP16 6UD

London Office:
AluK Design Studio
5-11 Worship Street
London
EC2A 2BH

Registered Number:
02881320